

# MARITIME TECHNOLOGY COOPERATION CENTRE IN THE PACIFIC (MTCC-PACIFIC)

CAPACITY BUILDING FOR CLIMATE MITIGATION IN THE MARITIME SHIPPING INDUSTRY  
THE GLOBAL MTCC NETWORK (GMN) PROJECT

## PARTNERS MEETING REPORT



# MTTCC-PACIFIC PARTNERS' MEETING

*27 June 2017, Suva, Fiji*

*Prepared by the MTCC-Pacific*

2017

## Contents

List of abbreviations .....	iv
Summary .....	1
Agenda item 1: Presentation of the GMN project .....	1
Agenda item 2: Presentation of the MTCC-Pacific project.....	2
Agenda item 3a: MTCC-Pacific partnerships.....	3
Agenda item 3b: GIZ Low-Carbon Sea Transport Project in Marshall Islands .....	4
Closing statement .....	4
ANNEX I – AGENDA.....	5
ANNEX II – PARTICIPANT & SIGNATURE LIST .....	6
ANNEX III – PHOTO & VIDEO LIBRARY.....	7
ANNEX IV – PRESENTATION AND MATERIALS .....	9

## List of abbreviations

ADB – Asian Development Bank	PICTs – Pacific Island countries and territories
EE – energy efficiency	PIDF – Pacific Islands Development Forum
EU – European Union	PRIF – Pacific Region Infrastructure Facility
FRDP – Framework for Resilient Development in the Pacific	RE – renewable energy
GHG – greenhouse gas	RMI – Republic of Marshall Islands
IMO – International Maritime Organization	SPC – Pacific Community
INDCs – Intended Nationally Determined Contributions	SPREP – Secretariat of the Pacific Regional Environment Programme
MTCC – Maritime Technology Cooperation Centre	TOR – terms of reference
NDCs – Nationally Determined Contributions	USP – University of the South Pacific

## Summary

The Maritime Technology Cooperation Centre in the Pacific (MTCC-Pacific) Partners' Meeting was held on Tuesday 27 June 2017 at the Pacific Community (SPC) Pasifika Conference Room in Suva, Fiji.

The meeting was attended by representatives from the MTCC-Pacific partners such as: European Union, Fiji Ministry of Infrastructure and Transport, Fiji Maritime Academy, Pacific Islands Development Forum, Pacific Islands Forum Secretariat, and the University of the South Pacific.

MTCC-Pacific is one the five centres that form the Global MTCC Network (GMN), a project aiming at building the capacity of developing countries for climate mitigation in the maritime shipping industry. This project is funded by the European Union and implemented by the International Maritime Organization (IMO). MTCC-Pacific is hosted by SPC in collaboration with the Secretariat of the Pacific Regional Environment Programme (SPREP).

## Agenda item 1: Presentation of the GMN project

### Summary

Mr Thierry Nervale, SPC Deputy Director Transport provided an introduction to the GMN project. GMN is an initiative funded by EU with total funding of Euro 10 million for a period of four years (January 2016 to December 2019).

The overall objective of the project is to support selected developing countries in limiting and reducing GHG emissions from their shipping sector through technical assistance/capacity-building to promote shipping low carbon and energy efficient technologies and operations.

More specifically, the project has established five MTCCs one in each of the target regions (MTCC-Caribbean – at the University of Trinidad & Tobago, MTCC-Africa – Jomo Kenyatta University of Agriculture & Technology, MTCC-Asia – Shanghai Maritime University, MTCC-Pacific – Pacific Community and MTCC-Latin America – International Maritime University of Panama), which would act as centres of excellence to promote the uptake of low carbon technologies in maritime transport.

The project objectives will be achieved through a number of clearly defined actions and interventions that generally include capacity building, uptake of energy efficient technologies and operations pilot projects, data collection and reporting pilot projects and dissemination activities; all to be carried out within the framework of the newly established MTCCs.

Full presentation is annexed as Annex IV – 1.

### Discussion

The meeting raised concerns about financial sustainability of the project, emphasising that each centre will get 1 million each while IMO will get 50% of the total budget. This was further clarified by SPC that IMO will be monitoring all activities for the five centres and bear some costs including logistics for regional events, communication and visibility. All costs involved will be part of the 10 million euro project budget. The European Union clarified that initially the idea was for IMO to launch the centres on global level and later that host institutions will be delegated with responsibilities for establishment and conduct of pilot-projects. The European Union is keeping a note on financial stability of each

centres – this area will be further reviewed. The European Union and other partners will be able to contribute in further support, but the centre needs to demonstrate and show its work and joint initiatives with its partners.

All contracts have been signed between IMO and the host Institutions and MTCC-Africa and MTCC-Asia has been officially launched, while MTCC-Pacific will be launched by the end of this year.

## Agenda item 2: Presentation of the MTCC-Pacific project

### Summary

Mr Thierry Nervale, Head of MTCC-Pacific and SPC's Deputy Director Transport updated the meeting on MTCC-Pacific project, which has the vision of a Pacific low-carbon maritime transport that supports the sustainable development goals of Pacific Island countries and territories (PICTs) and the transition towards a greener economy in the Pacific.

The MTCC-Pacific will provide capacity-building activities to improve the capacity of PICTs to comply with international instruments and facilitate the implementation of energy efficient measures in the maritime industry. This complements the regional maritime capacity-building activities related to the mandate of both SPC and SPREP namely: maritime safety, security and governance; trade facilitation and port efficiency for SPC; and pollution prevention from ships for SPREP. The delivery of pilot-projects will also assist in the promotion of low-carbon technologies and operations in the maritime sector.

The MTCC-Pacific will form part of international and regional networks of centres of excellence to share information and experiences and promote the uptake of low carbon technologies and operations and energy efficient practises in the maritime industry.

Target countries include Fiji, Samoa, Marshall Islands, Kiribati, Solomon Islands, Tuvalu and Vanuatu.

Some of the immediate key capacity building activities identified includes:

Regional Workshop on Energy Management in Ports: 31 July–2 August, Auckland, New Zealand

Pre-COP 23 meeting: 17–18 October, Denarau, Fiji

COP 23: 6–17 November, Bonn, Germany

Launch of MTCC-Pacific: 11–15 December, Suva, Fiji

Full presentation is annexed as Annex IV – 2.

### Discussion

The meeting suggested to have the official launch of MTCC-Pacific sometimes in November and not in December as proposed in the workplan and also noted that SPC and SPREP is yet to coordinate formally their activities in support to MTCC-Pacific.

The MTCC-Pacific will work with both SPC's Energy and Transport programme through shared technical expertise such as energy and transport policy and legal advice, implementation of safety management systems in domestic shipping companies and on board ships, pollution prevention and safety-related legislation/regulation advice/drafting and data collection and dissemination. Both SPC and SPREP will provide in-kind contribution to MTCC-Pacific in terms of staff time, legislation drafting. SPC's Deputy Director Transport will assume the role of Head of MTCC-Pacific and new staff (Maritime Industry Energy Efficiency Officer, Transport Greenhouse Gas Adviser and Administrative and Information Assistant) will be recruited and based at SPC, while SPREP has an existing Pollutions

Adviser, who will provide his expertise during project implementation. MTCC-Pacific sustainable financing will be targeted through IMO membership, European Union and SPC-SPREP traditional partners. However other non-traditional partners will be sought such as foundations. Sustainable financing will be part of MTCC-Pacific Strategic Plan.

MTCC-Pacific will need to design a relationship to work closely with the Micronesian Sustainable Transport Centre (MSTC), which will be a research-based centre while MTCC-Pacific is focusing into capacity building, and pilot-projects on energy efficiency and data collection.

The meeting advised establishing a mechanism to achieve the limitation or reduction of greenhouse gas emissions from ships in operation. Republic of Marshall Islands is the only country in the Pacific, which has identified their intended nationally determined contributions, estimating progress towards achieving Marshall Islands' targets would entail reducing emissions from transportation (including domestic shipping) by 16% in 2025 and 27% in 2030. The engagement of the Government of Germany with Marshall Islands is specifically due to its international commitments. Even though the achievement of the Nationally Determined Contributions (NDCs) is not a specific objective of MTCC-Pacific it is essential that all data collected can be shared to measure progress against NDCs and help for establishing new targets in other countries.

## Agenda item 3a: MTCC-Pacific partnerships

### Summary

Mr Thierry Nervale, SPC Deputy Director Transport informed the meeting that MTCC-Pacific partnership is with: IMO and other international organisations, other MTCCs, and regional partners. To enable all MTCC-Pacific partners work in close collaboration, an Advisory Group is established with the objective to share information and advice on partnerships and coordination between all stakeholders. The terms of reference for the Advisory Group is in draft format and requesting for all stakeholders comments. The purpose of the Advisory Group is to: meet regularly to share experience and discuss challenges and opportunities; receive information from MTCC-Pacific on its performance; and advise MTCC-Pacific and provide expertise to ensure MTCC-Pacific pilot-project activities and visibility are successfully implemented. August 14 – 18 has been proposed for first meeting of the Advisory Group.

Full presentation is attached as Annex IV – 3a.

### Discussion

The meeting decided to amend the Advisory Group ToR and suggest the Group should also provide advise on the global agenda of low carbon emissions and identifying innovations on how the process of technology transfer works and how the Pacific can improve on low carbon shipping. Regional organisations have specific groups of partners and the MTCC-Pacific Advisory Group has the potential to work with these groups. For example the Pacific Regional Infrastructure Facility (PRIF) and its partners (such as the Asian development Bank (ADB) and World Bank (WB)). It was noted also the importance of integrating a regional strategy/plan into the existing frameworks such as the Framework for Resilient Development in the Pacific (FRDP) and particularly its Goal 2: Low Carbon Development; and the Framework for Action on Transport Services (FATS).



## Agenda item 3b: GIZ Low-Carbon Sea Transport Project in Marshall Islands

### Summary

Dr Wulf Killmann of GIZ provided an update on GIZ Low Carbon Sea Transport in Marshall Islands, which is funded by German Federal Ministry of Environment, Nature Conservation, Building & Nuclear Safety (BMUB). The project 9.5 million euros is a 6-year project, which started in June 2017 and is implemented by Marshall Islands and GIZ. The project partners are USP and the Hochschule Emden – Leer (HEL).

Full presentation is attached as Annex IV – 3b.

### Discussion

The meeting noted that GIZ low carbon sea transport will be located and work with the MSTC but will not fund the centre. MSTC was passed through USP's Senate and in May, a new USP campus that has been opened in Marshall Islands. The project has established a project manager and more staff will be recruited in due course. The project still has to make implementation plans with USP, Marshall Islands and the German government. The meeting noted that this project could work closely with MTCC-Pacific to do joint studies/workshops in Marshall Islands by not duplicating activities.

The meeting applauded Kiribati' seafarer training centre, which has turned 50 years and is very successful. The training Centre could be a valuable partner of MTCC-Pacific.

The meeting suggested having a strategic link between GIZ project, MSTC and MTCC-Pacific to avoid duplication of work and identify clear roles of universities such as USP and Fiji National University.

### Closing statement

The Head of MTCC-Pacific confirmed that the meeting report will be sent to partners with the draft Advisory Group ToR for comments and confirm a first meeting of the Advisory Group in August.

SPC's Deputy Director General, Dr Audrey Aumua closed the meeting and encouraged all stakeholders to have coordinated collaborations and thanked all participants for the interactive sessions.



Maritime Technology Cooperation Centre - Pacific  
Pacific Community, Suva Regional Office  
Private Mail Bag, Suva, Fiji  
Tel: (679) 337 0733 | Fax: (679) 337 01 46  
Email: [mtcc-pacific@spc.int](mailto:mtcc-pacific@spc.int) | Web: [www.spc.int](http://www.spc.int)









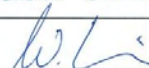




## ANNEX I – AGENDA

### MTCC-PACIFIC PARTNERS' MEETING Suva, Fiji, 27 June 2017

#### PROGRAMME

Time	Agenda item	Agenda issues	Presenters
0945		Participants arrive	
1000 – 1015		Administrative remarks	MTCC-Pacific
		Welcome address	SPC DDG
1015 – 1045	1	Presentation of the GMN project	MTCC-Pacific
1045 – 1115	2	Presentation of the MTCC-Pacific project	MTCC-Pacific
1115 – 1200	3	Partnerships GIZ Low-Carbon Sea Transport Project in Marshall Islands	MTCC-Pacific GIZ
1200 – 1230		Lunch	
1230		End	

## ANNEX II – PARTICIPANT & SIGNATURE LIST

WBS	Name	Job Title	Organisation	Gender	Line 1 address	Telephone	Mobile Number	Email Address
1	Mark Borg	Programme Manager	Pacific Islands Development Forum	M		3311578	9907633	mborg@pacificidf.org
	Christoph Wagner	Head of Cooperation	European Union Delegation in Fiji	M	didn't attend.			Christoph.WAGNER@eeas.europa.eu
3	Jesus Lavina	Team Leader	European Union Delegation in Fiji	M		9424496		jesus.lavina@eeas.europa.eu
4	Jeremy Hills	Director of the Institute of Marine Resources	University of the South Pacific	M				jeremy.hills@usp.ac.fj
5	Scott Hook	Infrastructure Adviser	Pacific Islands Forum Secretariat	M	✓	3312600		scotth@forumsec.org
6	Paul Bayly	Permanent Secretary	Fiji Ministry of Infrastructure and Transport	M	✓			paul.bayly@govnet.gov.fj
7	Lui Naisara	Deputy Secretary	Fiji Ministry of Infrastructure and Transport	M				lui.naisara@moit.gov.fj
	Lesi Vuatalevu	Acting Principal Transport Planner	Fiji Ministry of Infrastructure and Transport	M				lesi.vuatalevu@govnet.fj
	Alesi Waqanivalu	Transport Planning Assistant	Fiji Ministry of Infrastructure and Transport	F	didn't attend.			
10	Wulf Killmann	Programme Director & Senior Advisor	Deutsche Gesellschaft für Internationale Zusammenarbeit (GIZ) GmbH	M		679 3305 983; 679 330	679 9924984	wulf.killmann@giz.de
11	Anura Herath	Chief Executive Officer	Fiji Maritime Academy	M	✓	3315999		pa-fma@fmu.ac.fj Lillian.williams@fmu.fj
12	Audrey Aumua	Deputy Director General	Pacific Community	F	present ✓			audreya@spc.int
13	Thierry Nervale	Head of MTCC-Pacific	MTCC-Pacific	M	present ✓			thierryn@spc.int
14	Bernedine Managreve	Administrative Assistant (Transport)	Pacific Community	F				bernedinem@spc.int
15	Ore Toua	Maritime Training Adviser	Pacific Community	F		337 9254	752 6477	oret@spc.int
16	Sitaling Payne	Maritime Port Adviser	Pacific Community	M	present ✓			Sitalingp@spc.int
	Tregor Ishoda Albon	Deputy Head of Mission	Marshall Islands Embassy	M	didn't attend.		670 3060417	<del>amrino@marshallislands.gov.fj</del>
18	Anil Rana	Associate Dean (Research) and Professor   Mechanical Engineering		M			9960414	anil.rana@fmu.ac.fj

## ANNEX III – PHOTO & VIDEO LIBRARY







## ANNEX IV – PRESENTATION AND MATERIALS

 **GMN** | The Global MTCC Network  
A global network for energy-efficient shipping

## Introduction to Global Maritime Network (GMN) Project

Name | Workshop | Date | Location



The Global MTCC Network (GMN) project is funded by the European Union and implemented by IMO. The views expressed in this presentation can in no way be taken to reflect the views of the European Union.

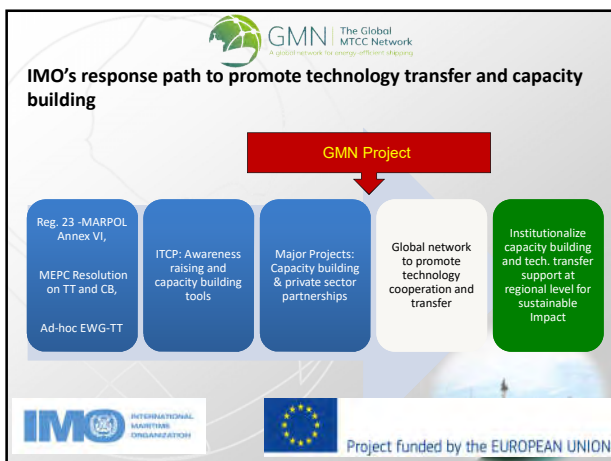
 

### GMN: An initiative funded by the EU

- Total Funding Euro 10,000,000
- Jan, 2016 – Dec, 2019 (4 Years)
- 5 MTCCs to be formed
- During the project, the MTCCs to become fully operational
- Beyond the project, the MTCCs will become financially self-sustained



 **GMN** | The Global MTCC Network  
A global network for energy-efficient shipping





### GMN Project objectives

**Overall Objective:**  
Build capacity – Improve energy efficiency – Reduce GHG emissions – Contribute to fight against climate change

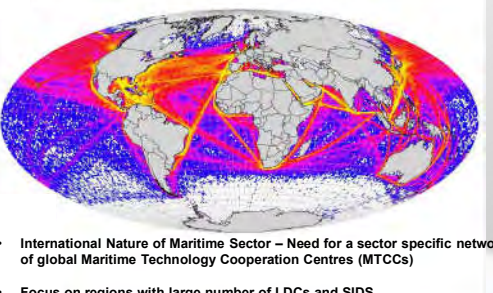
**Specific Objectives:**

- Establish 5 MTCCs with regional dimension;
- Improve the capacities in maritime administrations and port authorities in the developing regions;
- Promote the uptake of low carbon technologies and operations through implementation of pilot projects; and
- Pilot trial of voluntary "Data Collection and Reporting (DCR)" systems.
- MTCCs transforming themselves into regional centres of excellence




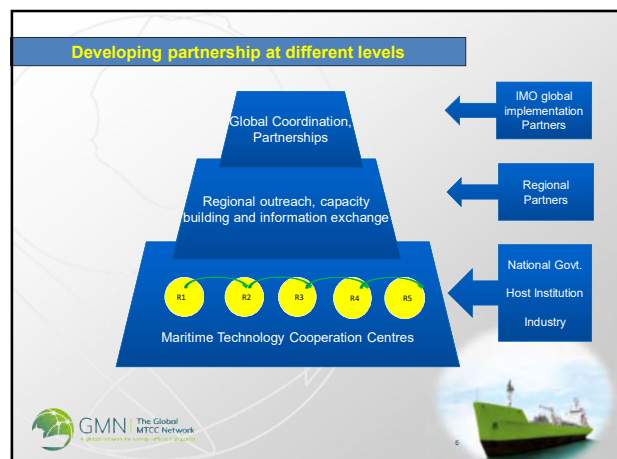
 **GMN** | The Global MTCC Network  
A global network for energy-efficient shipping

### International nature of maritime industry

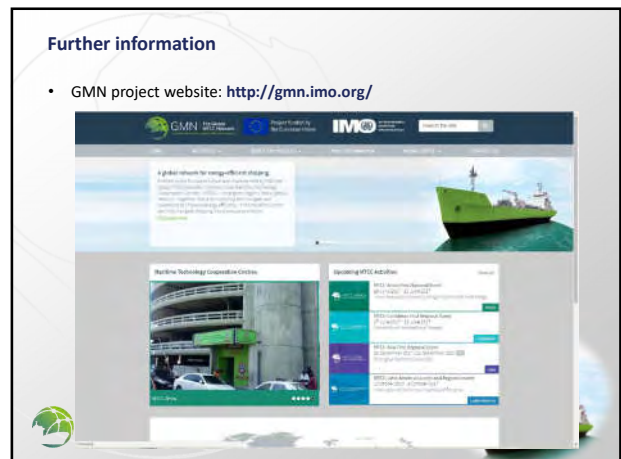
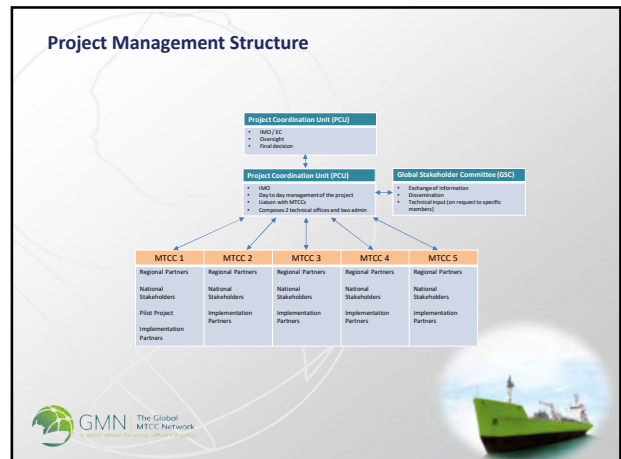
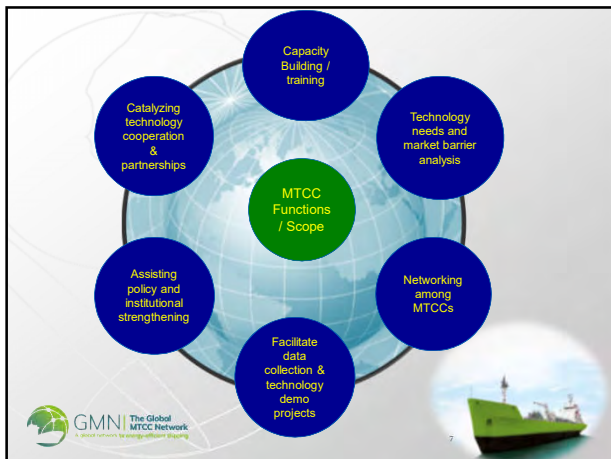


- International Nature of Maritime Sector – Need for a sector specific network of global Maritime Technology Cooperation Centres (MTCCs)
- Focus on regions with large number of LDCs and SIDS (Africa, Asia, Caribbean, Latin America and Pacific)

 **GMN** | The Global MTCC Network  
A global network for energy-efficient shipping







**Specific activities of MTCCs**

- Capacity building**
  - 4 national workshops
  - 2 regional workshops
  - Some of the workshops to be organized outside of the MTCC host country
- Pilot projects**
  - Two pilot projects to be defined
  - The projects to be implemented

GMN | The Global MTCC Network  
A global network for energy-efficient shipping

**Thank you for your attention!**

<http://gmni.imo.org/>

GMN | The Global MTCC Network  
A global network for energy-efficient shipping





GMN | The Global MTCC Network  
A global network for energy-efficient shipping

MTCC PACIFIC  
Maritime Technology Cooperation Centre

### Maritime Transport in the Pacific

2345 domestic vessels			7000 Foreign vessels		Ports	
L>15 m or GRT> 50	1176	620 Vessels carrying passengers	50% in PNG	Small ports host	100-150m container ship	Small tankers
L<15 m or GRT<50	950	GRT>500 Passengers >12	18	35% IN Fiji, NC and FP	30-50m foreign fishing vessels & associated cargo ships	
No information	219	GRT>500 Passengers >400	5	15% in the rest of PICTs	Above + Large bulk carriers and tankers	2000-passenger cruise ships
		No information	247			

GMN | The Global MTCC Network  
A global network for energy-efficient shipping

MTCC PACIFIC  
Maritime Technology Cooperation Centre

- Capacity Building for Climate Mitigation in the Pacific Maritime Shipping Industry - Support Pacific SIDS and LDCs in limiting and reducing GHG emissions from their shipping sectors
- Budget €1 million funding 2017-2019
- Consortium of hosting institutions: SPC & SPREP
- Fiji is the host country
- targeted countries:
  - All SPC members for regional capacity building workshops
  - Fiji, Samoa, Marshall Islands, Kiribati, Solomon Islands, Tuvalu and Vanuatu
- MTCC-Pacific results:
  - Establishment and operation
  - Regional and national capacity building workshops
  - Pilot project on the "uptake of ship energy efficient technologies and operations"
  - Pilot project on "fuel consumption data collection and reporting"

EUROPEAN UNION

IMO INTERNATIONAL MARITIME ORGANIZATION

GMN | The Global MTCC Network  
A global network for energy-efficient shipping

MTCC PACIFIC  
Maritime Technology Cooperation Centre

### MTCC-Pacific vision

- Pacific low-carbon maritime transport that supports the sustainable development goals of PICTs
- Support national approaches to uptake low-carbon technologies and operations within PICTs maritime sectors to reduce GHG emissions and reliance to fossil fuels
- Provide capacity-building activities to improve the capacity of PICTs to comply with international instruments and facilitate the implementation of energy efficient measures in the maritime industry
- Contribute to international and regional networks of centres of excellence to share information and experiences and promote the uptake of low carbon technologies and operations and energy efficient practises in the maritime industry

**Targeted countries:**  
Fiji (host country)  
Samoa  
Marshall Islands  
Kiribati  
Solomon Islands  
Tuvalu  
Vanuatu

Development of a Strategic Plan 2017-2019

GMN | The Global MTCC Network  
A global network for energy-efficient shipping

MTCC PACIFIC  
Maritime Technology Cooperation Centre

### Background – Framework for Resilient Development in the Pacific (FRDP)

- Pacific is 0.03% of the world's total GHG
- 2013 Majuro Declaration for Climate Leadership PICTs committed to further minimize their emissions
- Nationally Determined Contributions (NDC) under the Paris Agreement
- In 2010, energy, transport and industrial sectors accounted for over ¾ total energy demand of PICTs - Oil is the main energy source
- Increase in petroleum price from 2002-2008 cost most PICTs about 10% of their gross national incomes
- period 1990–2010, total energy supply in PICTs grew at a rate of 4.6% per year – CO<sub>2</sub> emissions grew by 3.9%
- Greatest opportunities for reducing GHG are in electricity generation and the transport and industrial sectors:
  - Increasing energy efficiency is more cost-effective
  - more energy-efficient modes of transport, and reducing energy consumption and other sources of greenhouse gas emissions in the agriculture, tourism and fisheries sectors, considering the growing emissions from these sector

GMN | The Global MTCC Network  
A global network for energy-efficient shipping

MTCC PACIFIC  
Maritime Technology Cooperation Centre

### MTCC-Pacific objective & results

Overall objective:	Timeframe
To support targeted PICTs with reducing their Green House Gas emissions and the reliance on fossil fuel through the implementation of standards, best practises and innovative solutions by maritime transport operators contributing to their national objectives	3 years 2017-2019
<b>Results</b>	
<b>Result 1:</b> MTCC formed and established	
<b>Result 2:</b> MTCC delivered capacity building workshop (national and regional)	
<b>Result 3:</b> Implementation of a demonstration pilot project on "uptake of ship energy efficient technologies and operations"	
<b>Result 4:</b> Implementation of a pilot project on "fuel consumption data collection and reporting" in line with IMO regulations	
<b>Result 5:</b> MTCC delivered all agreed communication and visibility actions	

## MTCC-Pacific established and operational

Intermediate result	Description
MTCC established in the office of SPC	<ul style="list-style-type: none"> <li>Office at SPC Regional Office, Lotus Building 3<sup>rd</sup> floor</li> </ul>
Appoint qualified staff to MTCC	<ul style="list-style-type: none"> <li>SPC's Deputy Director Transport is Head of the MTCC-Pacific</li> <li>3 dedicated staff: <ul style="list-style-type: none"> <li>Transport GHG Adviser</li> <li>Maritime Industry Energy Efficiency Officer</li> <li>Administration and Information Assistant</li> </ul> </li> </ul>
MTCC strategic plan 2017-2019 and workplan for 2017 adopted	<ul style="list-style-type: none"> <li>Develop 2017 Annual Workplan</li> <li>Develop Strategic Plan 2017-2019</li> </ul>
Project workplan activities and expenditures successfully implemented and reported	<ul style="list-style-type: none"> <li>MTCC-Pacific internal processes to monitor progress support by SPC procedures</li> </ul>
Implement partnerships and raise funds for MTCC from 2020 onwards	<ul style="list-style-type: none"> <li>Implement partnerships with regional partners</li> <li>Establish an Advisory Group</li> </ul>

## MTCC-Pacific Communication & Visibility

Intermediate result
Design Communication and visibility plan
Produce communication and visibility materials
Develop a dedicated website
Produce a promotional audiovisual product
Communicate regularly on progress
Publish articles on MTCC-Pacific activities
Publish regular technical advisories and policy briefs
Establish MTCC presence and exposure at all possible events

## MTCC-Pacific capacity-building activities

Intermediate result	Description
Regional Workshop for regional strategy on Energy Efficiency in maritime transport	<ul style="list-style-type: none"> <li>By the end of 2017 (December)</li> <li>Official launch of MTCC-Pacific</li> </ul>
Regional Workshop on Energy Management in Ports	<ul style="list-style-type: none"> <li>August 2017</li> <li>With the PMTA conference</li> </ul>
Regional Workshop on the Implementation of Annex VI of MARPOL convention	<ul style="list-style-type: none"> <li>TBC</li> </ul>
Regional Train-the-Trainer (TTT) Course on Energy Efficient Operation of ships	<ul style="list-style-type: none"> <li>TBC</li> </ul>
Regional Workshop on Low-carbon Maritime Transport in the Pacific	<ul style="list-style-type: none"> <li>2019</li> <li>Regional Strategy 2020-2025</li> </ul>
National Workshop on Energy Efficient Ship Operation National Training on the development and Implementation of Ship Energy Efficiency Management Plan (SEEMP)	<ul style="list-style-type: none"> <li>In each of 7 targeted countries</li> </ul>
Develop and propose a DLP on Energy Efficient Operation of ship and ship energy efficiency requirements	<ul style="list-style-type: none"> <li>Based on National Workshops materials</li> </ul>

## MTCC-Pacific Key Milestones 2017

	2017											2018
	May	Jun	Jul	Aug	Sep	Oct	Nov	Dec	Jan			
SPC-IMO contract signing	12											
Set up MTCC-Pacific Office												
MTCC-Pacific staff appointed												
MTCC-Pacific 2017-2019 Strategic Plan developed and adopted												
Meetings of the Advisory Group		27										
Quarterly Progress Report			7			6						
Annual Report											31	
Participation to COP 23								6-17				
RW2 Regional Workshop on Energy Management in Ports				1-2								
RW1 Regional Workshop and MTCC-Pacific Official Launch										11-15		
Fiji National Workshop on Energy Efficient Ship Operation							Tbc					
Develop a website												

## Pilot-project on Energy Efficiency & Data Collection

Pilot-project on Energy Efficiency	Pilot-project on Data Collection
Develop generic laws for MARPOL Annex VI	Develop a data collection template
Extension of the Pacific Gender & Climate Change Toolkit	Develop a generic regulation for data collection
Develop templates for energy efficiency policy and adapted SEEMP and EEDI	Collect relevant data and information
Develop a guide for port energy management based on ISO 50000 standards	Analyse data and information and produce a report on GHG emissions
Implemented an adapted SEEMP onboard vessels	
Review the implementation of SEEMP measures	
Research, case study and expertise to uptake a low-carbon technology on board vessels	
Implement a low-carbon technology onboard vessel	
Conduct energy audit level 1 in pacific port	
GHG reduction project implemented in port	
Conduct energy audit level 2 or 3 in port	

*The Global MTCC Network (GMN) project is funded by the European Union and is implemented by IMO*

THANK YOU





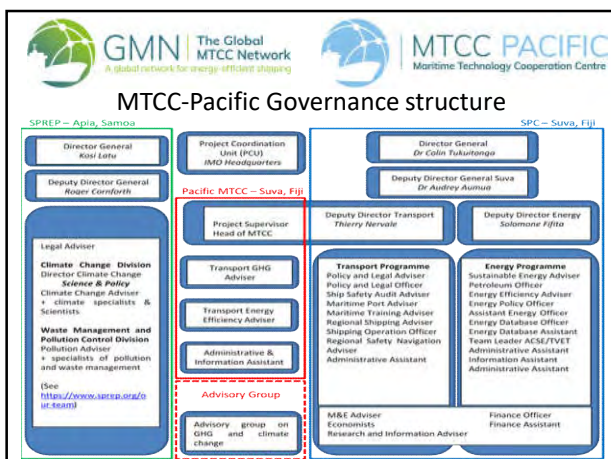
### ADVISORY GROUP – Objectives

- **Objective of the Advisory Group** established with MTCC-Pacific is to share information and advice on partnerships and coordination between all stakeholders:
  - Avoid duplication
  - Use resources of each organisation in their area of expertise to complement each other and have better impact
  - Coordinate and collaborate and be more efficient and cost-effective
  - Use complementary of expertise, resources and partnerships
  - Focus on replication and upscaling of best practices
  - Benefit from the objectives of improved cooperation, coordination and collaboration of CROP agencies
  - Develop, implement, and promote sustainable 'best practices' GHG emissions and use of low carbon technologies at national and regional levels in the Pacific region



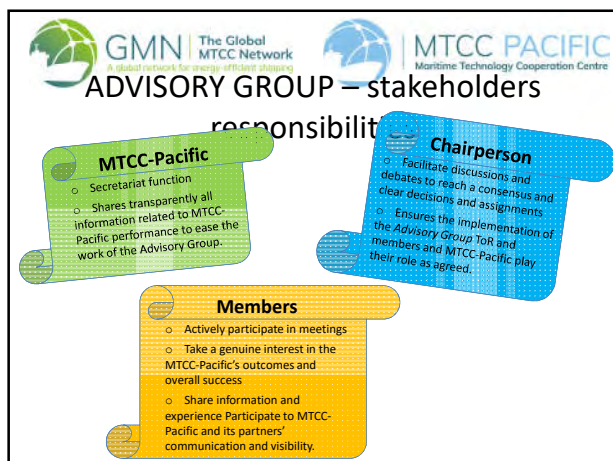
### ADVISORY GROUP – Purpose

- **Purpose of the Advisory Group** is to:
  - meet regularly to share experience and discuss challenges and opportunities
  - receive information from MTCC-Pacific on its performance
  - advise MTCC-Pacific and provide expertise to ensure MTCC-Pacific pilot-project activities and visibility are successfully implemented



### ADVISORY GROUP – membership

- **The members of the Advisory Group** are:
  - Fiji Ministry of Infrastructure and Transport (Chair);
  - 2 other targeted countries;
  - Deutsche Gesellschaft für Internationale Zusammenarbeit (GIZ) GmbH;
  - Fiji Delegation of the European Union;
  - Fiji Maritime Academy (FMA);
  - Fiji National University (FNU);
  - Pacific Community (SPC);
  - Pacific Islands Development Forum (PIDF);
  - Pacific Islands Forum Secretariat (PIFS);
  - Secretariat of the Pacific Regional Environment Programme (SPREP);
  - University of the South Pacific (USP).





**The Global MTCC Network (GMN) project is funded by the European Union and is implemented by IMO**

**THANK YOU**

**EUROPEAN UNION**

**IMO** INTERNATIONAL MARITIME ORGANIZATION

Federal Ministry for the Environment, Nature Conservation, Building and Nuclear Safety

## Transitioning to Low Carbon Sea Transport

*Dr Wulf Killmann*  
June 2017

10/07/2017 Page 1




Federal Ministry for the Environment, Nature Conservation, Building and Nuclear Safety

## Relationship to MSTC

- Housed in Micronesian Sustainable Transport Centre campus
- Part of MSTC
- Project contributes to workstreams 2. training, 3. mapping, 5. policy review, 6 economic analysis, 7. technology

16.02.2011 Page 4






Federal Ministry for the Environment, Nature Conservation, Building and Nuclear Safety

## Overview

- Brief
- Relationship to MSTC
- Outcomes
- Phase I
- Phase II
- Policy Component

16.02.2011 Page 2

Federal Ministry for the Environment, Nature Conservation, Building and Nuclear Safety

## Outcomes

- Contribution to reduction of emissions from shipping
- Contribution to achieving RMI's NDC
- Lower shipping costs
- Saving on Fossil fuel imports
- Proposal for upscaling
- Inputs of RMI to UNFCCC, IMO & regional meetings

16.02.2011 Page 5






Federal Ministry for the Environment, Nature Conservation, Building and Nuclear Safety

## BRIEF

- Funded By German Federal Ministry of Environment, Nature Conservation, Building & Nuclear Safety (BMUB)
- 9,5 Million Euros
- 6 years, start June 2017
- Implemented by RMI & GIZ
- Partners USP and Hochschule Emden – Leer (HEL)

16.02.2011 Page 3

Federal Ministry for the Environment, Nature Conservation, Building and Nuclear Safety

## PHASE I

- Mapping of sea transport sector in RMI
- Assessment of emissions, economics & logistics of Interisland shipping in RMI Contribution to achieving RMI's NDC
- Assessment of technical suitability of MISC ships for retrofitting
- Technological options for emission reduction
- Decision on option

16.02.2011 Page 6





## Phase II - Interisland

- Implementation of option (construction phase)
- Testing of ship in service for two years
- Training of RMI crew
- Assessment of emissions, economics, logistics
- Report to RMI Government



## KOMMOL TATA



## Phase II – Intra-lagoon

- Subcontract with Waan Aelōñ in Majel (WAM)
- Assessment of intra-lagoon crafts
- Development of prototype for transport of up to 10 persons/ 1000 coconuts
- Deployment & testing of proto -type



## Policy component

- Throughout both phases
- Assessment of policy/ legal framework
- Assistance to adjust, if necessary
- Support to RMI- High Ambition Coalition in UNFCCC & IMO